



## REACH Summary of Operations Q1 7/1/23 to 9/30/23

Participation Metrics					
	Central	Northern	Southern	Western	Grand Total
Eligible Referring Locations	4	10	7	2	23
Referring Location Utilization	4	9	7	2	22
Utilization %	100%	90%	100%	100%	96%

Transfer Outcome Metrics					
	Central	Northern	Southern	Western	Grand Total
% Total Requests by Region	37%	39%	19%	4%	100%
Requested Transfer Volume	574	609	295	65	1,543
Accepted Transfer Volume	524	553	280	59	1,416
% Transfers Accepted	91%	91%	95%	91%	92%
# Accepted Transfers Outside of REACH	5	9	8	3	25
% Accepted Transfers Outside of REACH	1%	2%	3%	5%	2%
Median # Attempted Locations	2	4	2	3	3
Max # Attempted Locations	25	18	11	9	25
# Canceled Requests	50	56	15	6	127
% Canceled Requests	9%	9%	5%	9%	8%

Canceled Request Reasons										
	Central		Northern		Southern		Western		Grand Total	
	#	%	#	%	#	%	#	%	#	%
Physician Consult Only	23	46%	16	29%	3	20%	4	67%	46	36%
Patient Left AMA	13	26%	12	21%	6	40%	1	17%	32	25%
Discharged Home or Lower Level of Care	9	18%	8	14%	3	20%	1	17%	21	17%
Referring System Admitted Patient	4	8%	12	21%	2	13%			18	14%
Weather Prohibits Safe Transfer			7	13%					7	6%
Patient/Family/MD Refused	1	2%	1	2%	1	7%			3	2%

Requested Reasons for Transfer										
	Central		Northern		Southern		Western		Grand Total	
	#	%	#	%	#	%	#	%	#	%
Service Line / Specialty Not Available	555	97%	586	96%	275	93%	58	89%	1,474	96%
Higher Level of Care	15	3%	17	3%	19	6%	6	9%	57	4%
Patient / Family request	1	0%	3	0%	1	0%	1	2%	6	0%
Continuity of Care	3	1%	1	0%					4	0%
Capacity			2	0%					2	0%

Top 20 Requested Medical Specialties					
	Central	Northern	Southern	Western	Statewide
Cardiology	110 (19%)	142 (23%)	40 (14%)	11 (17%)	303 (20%)
GI - General	50 (9%)	82 (13%)	24 (8%)	3 (5%)	159 (10%)
General Surgery	56 (10%)	38 (6%)	31 (11%)	5 (8%)	130 (8%)
Pulmonology	18 (3%)	40 (7%)	30 (10%)	3 (5%)	91 (6%)
Urology	33 (6%)	26 (4%)	13 (4%)	6 (9%)	78 (5%)
Nephrology	22 (4%)	23 (4%)	21 (7%)	5 (8%)	71 (5%)
Neurology-General	25 (4%)	28 (5%)	16 (5%)	1 (2%)	70 (5%)
Orthopedics	29 (5%)	25 (4%)	12 (4%)	2 (3%)	68 (4%)
Neurology-Stroke Intervention	22 (4%)	25 (4%)	14 (5%)	1 (2%)	62 (4%)
Trauma	20 (3%)	19 (3%)	5 (2%)	8 (12%)	52 (3%)
Podiatry	32 (6%)	6 (1%)	14 (5%)	1 (2%)	53 (3%)
Internal Medicine (Medical)	12 (2%)	16 (3%)	14 (5%)	1 (2%)	43 (3%)
Neurosurgery	13 (2%)	21 (3%)	4 (1%)	3 (5%)	41 (3%)
Endocrine	14 (2%)	10 (2%)	10 (3%)	1 (2%)	35 (2%)
Hand	24 (4%)	5 (1%)	6 (2%)	1 (2%)	36 (2%)
ENT	11 (2%)	11 (2%)	6 (2%)	1 (2%)	29 (2%)
GI - Complex (ERCP, EUS, etc.)	11 (2%)	13 (2%)	5 (2%)		29 (2%)
Oncology/Hematology	7 (1%)	11 (2%)	2 (1%)	4 (6%)	24 (2%)
Hepatology	3 (1%)	12 (2%)	5 (2%)	1 (2%)	21 (1%)
Vascular Surgery	9 (2%)	8 (1%)	3 (1%)		20 (1%)
All Other Specialties	53 (9%)	48 (8%)	20 (7%)	7 (11%)	128 (8%)



## REACH Summary of Operations Q1 7/1/23 to 9/30/23

Transferred Levels of Care											
	Central		Northern		Southern		Western		Grand Total		
	#	%	#	%	#	%	#	%	#	%	
Peds	ED	11	2%	2	0%	2	1%			15	1%
	Gen Peds	5	1%	3	1%	3	1%			11	1%
	PICU			2	0%	2	1%			4	0%
	<b>Total</b>	16	3%	7	1%	7	3%			30	2%
Adults	Tele/PCU	206	39%	221	40%	67	24%	18	31%	512	36%
	Med Surg	164	31%	137	25%	59	21%	14	24%	374	26%
	ED	73	14%	62	11%	117	42%	14	24%	266	19%
	ICU	49	9%	113	20%	25	9%	6	10%	193	14%
	Trauma	15	3%	13	2%	3	1%	7	12%	38	3%
	OB Triage/L&D	1	0%			2	1%			3	0%
<b>Total</b>	508	97%	546	99%	273	98%	59	100%	1,386	98%	

Median Transfer Time (hours) by Level of Care - (initial request to REACH until placement secured)										
	Central		Northern		Southern		Western		Grand Total	
	#	%	#	%	#	%	#	%	#	%
Peds	PICU			0.8		2.2				1.5
	Gen Peds	1.3		1.2		0.9				1.2
	ED	0.3		0.2		0.8				0.3
	<b>Total</b>	0.3		1.0		1.1				0.5
Adults	Med Surg	1.7		2.0		2.0		1.8		1.8
	Tele/PCU	1.5		1.9		1.7		1.2		1.7
	ICU	1.7		1.7		1.7		2.5		1.7
	OB Triage/L&D	1.1				0.5				0.8
	ED	0.7		1.1		0.7		0.7		0.8
	Trauma	0.5		0.4		1.2		0.6		0.6
<b>Total</b>	1.4		1.7		1.4		1.3		1.6	

Patient Demographics - Race											
	Central		Northern		Southern		Western		Grand Total		
	#	%	#	%	#	%	#	%	#	%	
American Indian/Alaska Native	340	59%	500	82%	161	55%	64	98%	1,065	69%	
White/Caucasian	96	17%	63	10%	65	22%			224	15%	
Unknown	120	21%	25	4%	22	7%			167	11%	
Hispanic	16	3%	11	2%	43	15%			70	5%	
Black/African American	1	0%	9	1%	2	1%			12	1%	
>1 Race Identified					2	1%	1	2%	3	0%	
Asian	1	0%							1	0%	
Native Hawaiian/Pacific Island..			1	0%					1	0%	

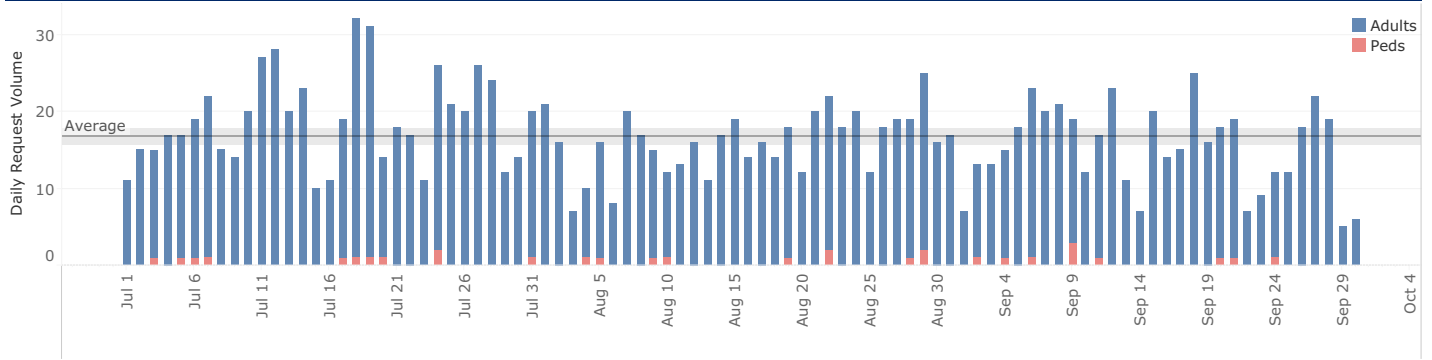
Patient Demographics - Age											
	Central		Northern		Southern		Western		Grand Total		
	#	%	#	%	#	%	#	%	#	%	
Peds	0	8	1%	3	0%	3	1%			14	1%
	10	8	1%	5	1%	4	1%			17	1%
	<b>Total</b>	16	3%	8	1%	7	2%			31	2%
Adults	10	5	1%	5	1%	3	1%	1	2%	14	1%
	20	56	10%	34	6%	21	7%	7	11%	118	8%
	30	77	13%	88	14%	38	13%	13	20%	216	14%
	40	83	14%	98	16%	41	14%	12	18%	234	15%
	50	101	18%	112	18%	48	16%	11	17%	272	18%
	60	79	14%	93	15%	64	22%	8	12%	244	16%
	70	94	16%	100	16%	48	16%	7	11%	249	16%
	80	52	9%	55	9%	17	6%	5	8%	129	8%
	90	11	2%	15	2%	6	2%			32	2%
	100			1	0%			1	2%	2	0%
	110					1	0%			1	0%
<b>Total</b>	558	97%	601	99%	287	98%	65	100%	1,511	98%	

Patient Demographics - Gender											
	Central		Northern		Southern		Western		Grand Total		
	#	%	#	%	#	%	#	%	#	%	
Peds	Female	9	2%	2	0%	2	1%			13	1%
	Male	7	1%	6	1%	5	2%			18	1%
Adults	Female	252	44%	280	46%	150	51%	36	55%	718	47%
	Male	306	53%	320	53%	138	47%	29	45%	793	51%
	Unknown			1	0%					1	0%

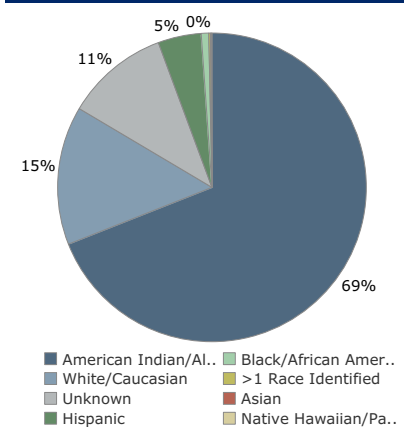
**In and Out of Region Transfers by Referring Region**

	Central	Northern	Southern	Western	Grand Total	
Peds	In Region	100%	29%	43%	70%	
	Out of Region		71%	57%	30%	
Adults	In Region	98%	18%	80%	31%	60%
	Out of Region	2%	82%	20%	69%	40%

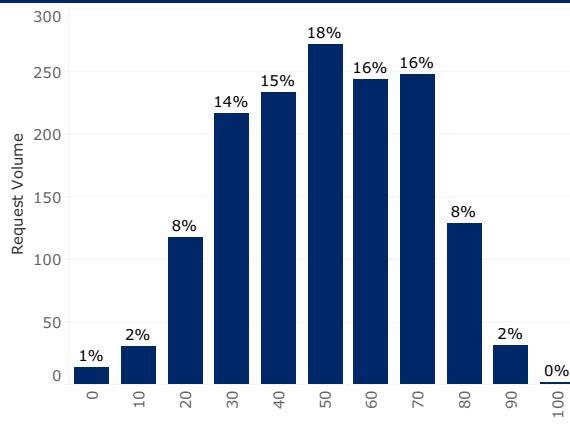
**Daily Request Volume Trend**



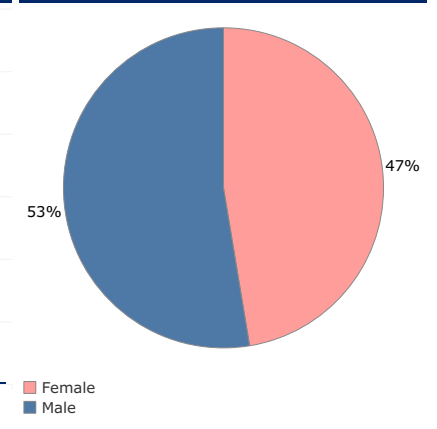
**Race Demographics for Period**



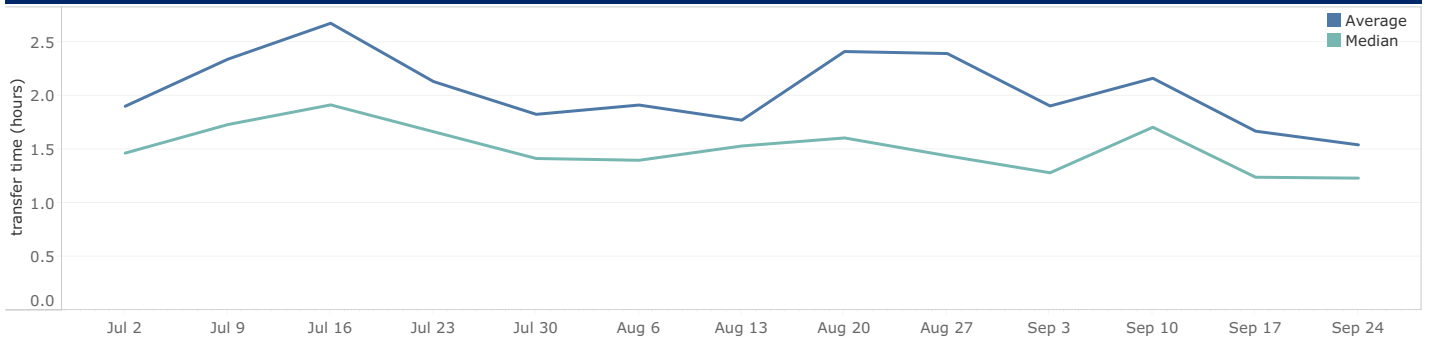
**Age Demographics for Period**



**Gender Demographics for Period**



**Transfer Time (hours) by Level of Care - (initial request to REACH until placement secured)**



**Referring Regions for Transferred Cases Weekly Trend**

